

Product Information Locking Systems



Locking-Systems

In order to create a safe connection between liner and prosthesis, Streifeneder offers locking systems, which are optimally tailored to the users' needs. The large choice of locking systems enables the technician to create a socket connection that is adapted to the patients' requirements.

Every Streifeneder lock system unlocks under tensile load, which enables the patient to easily unlock the prosthesis even under tension, e. g. in a sitting position. A lockable mechanism is offered as an accessory for our clutch locks, which makes it easier for geriatric patients in particular to take off the prosthesis. The Locking Systems differ on the one hand by the type of locking and on the other hand by the design of the housing. Various types of locking systems provide the technician with the necessary freedom to design an individual prosthetic alignment. Each Streifeneder locking system can be combined with any type of liner.



Series S1 – Clutch Lock

The Streifeneder lock series S1 is a continuous pin fastening system with worm thread. This prevents any movement and generates a user-friendly connection. The pin pulls downwards and the patient additionally also has the possibility to draw himself manually downwards and therefore does not have to carry out the connection under pressure.

The locking mechanism developed by Streifeneder always ensures a simple unlocking of the locking system – even under severe tensile stress by the prosthesis. The precision retaining bearing ensures a long lifetime even for highly active patients.



Series S2 – Shuttle Lock

The Streifeneder lock series S2 is locked under pressure with an indented pin. The shuttle pin generates an audible clicking noise when engaging and thereby gives the user the security to be safely connected to the prosthesis. This is a benefit especially for geriatric users.

The simple design of the system ensures an easy and rapid maintenance. Due to the design of the pin, it is easy to put on the prosthesis without getting jammed.

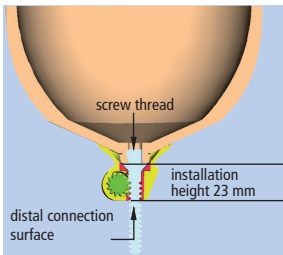


Series S3 – Easy Lock

The Streifeneder lock series S3 is a continuous pin fastening system with a smooth pin. The Easy-Pin is silently locked under pressure. This gives the user a safe locking for the entire length of the pin.

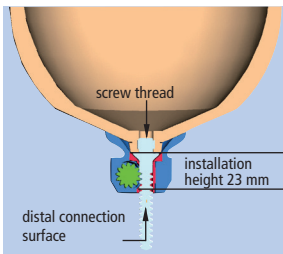
The high-quality material of the pin ensures a very long lifespan even under extreme stress. The fine structuring of the pin at the same time allows for a stepless and safe locking.

Assembly Height of the Locking Systems



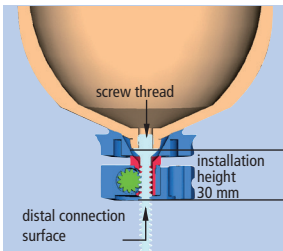
Series 100

The lock series 100 is made of synthetic material, which makes it light as a feather and very small. It is suitable for users of any weight category. The alignment can easily be corrected in connection with a socket adapter if it deviates from the plumb line.



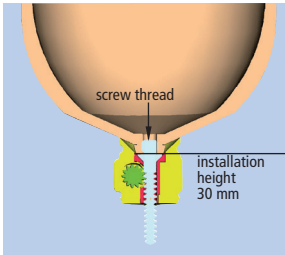
Series 150

The lock series 150 is characterized by its small construction and its high-strength aluminium housing. The alignment can easily be corrected in connection with a socket adapter if it deviates from the plumb line.



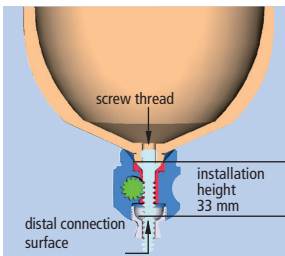
Series 200

The lock series 200 is made of aluminium and stands out due to its light and flat design. Distally, various socket adapters can be used.



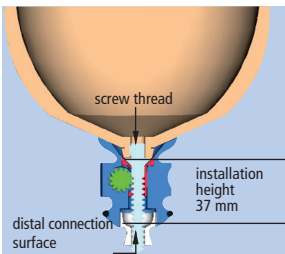
Series 300

The lock series 300 is made of weight-optimized synthetic material. It is suitable for both laminated and thermoplastic sockets and can entirely be replaced by means of working with deep-drawing dummy. Various mold inserted discs and socket adaptors can be installed at the distal end.



Series 400

The lock series 400 is made of aluminium and is fixed by means of a three-prong socket adaptor. Special advantages of this lock series is the pyramid adapter, which is already integrated into the lock and the rotational adjustment possibility.

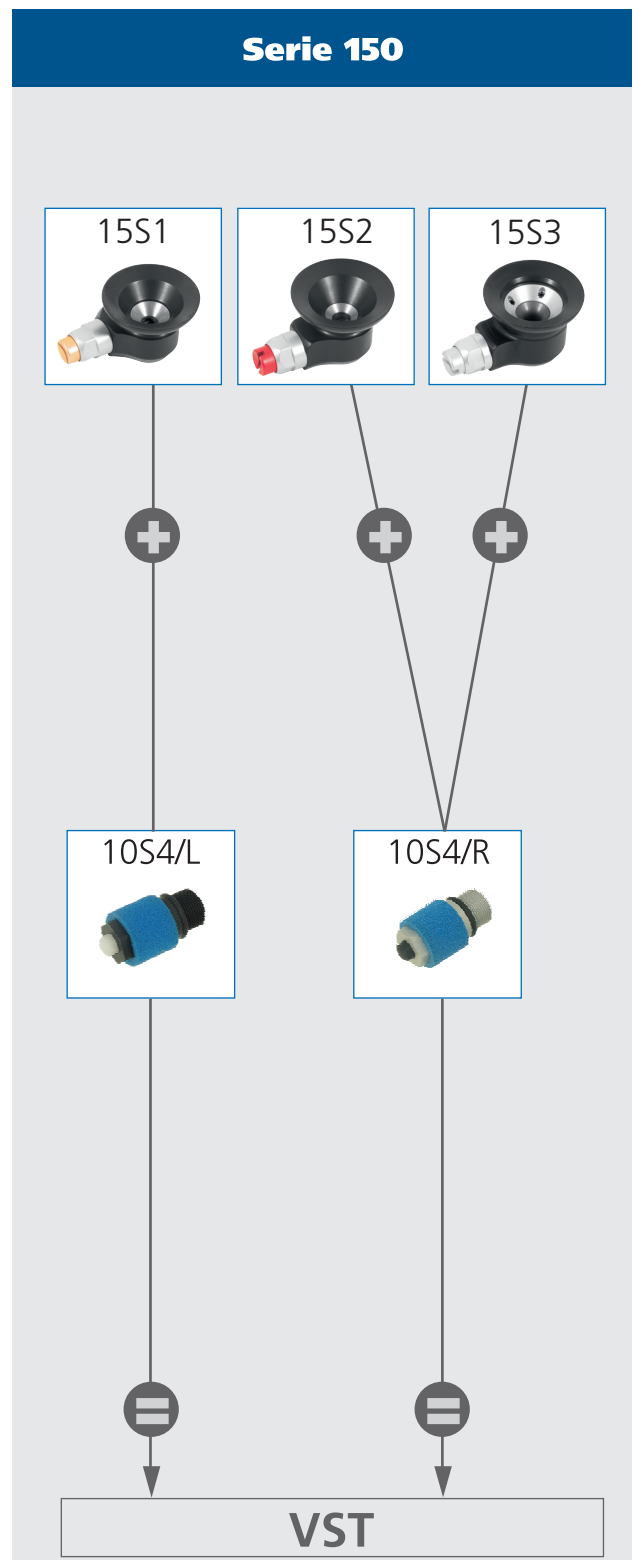
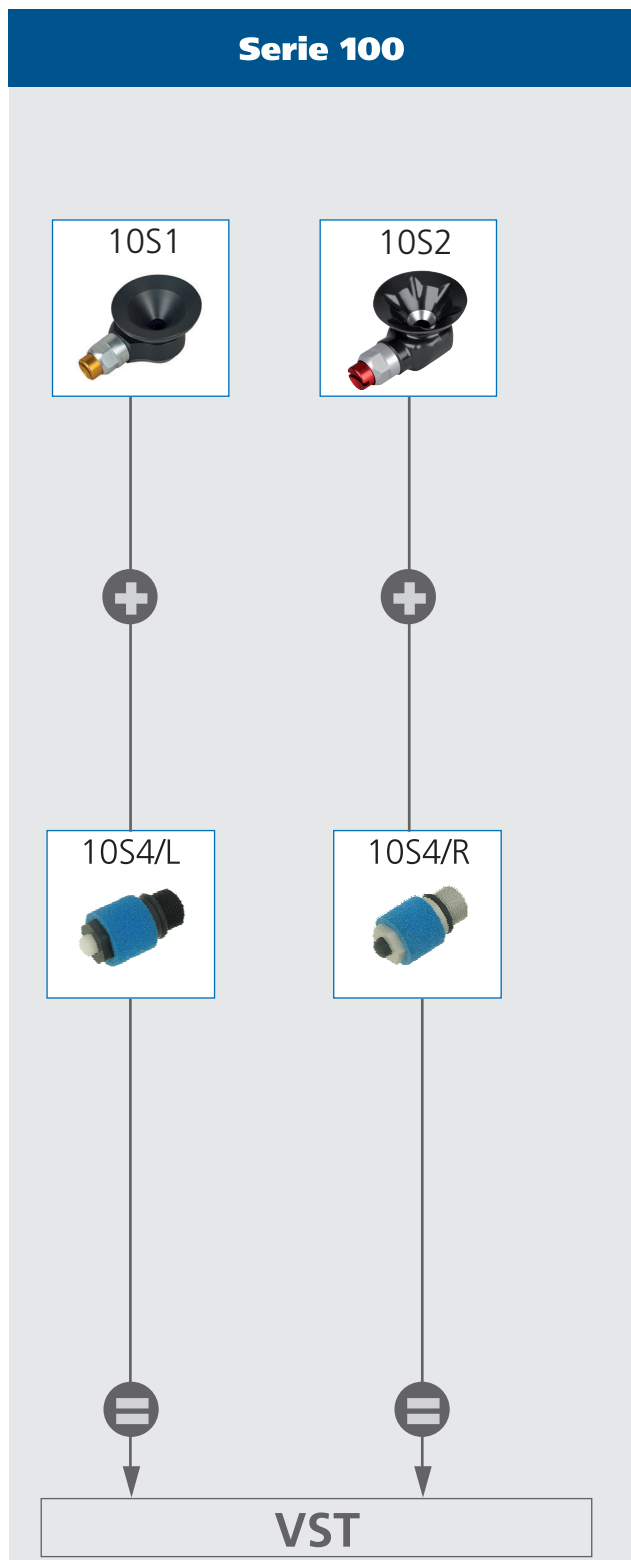


Series 500

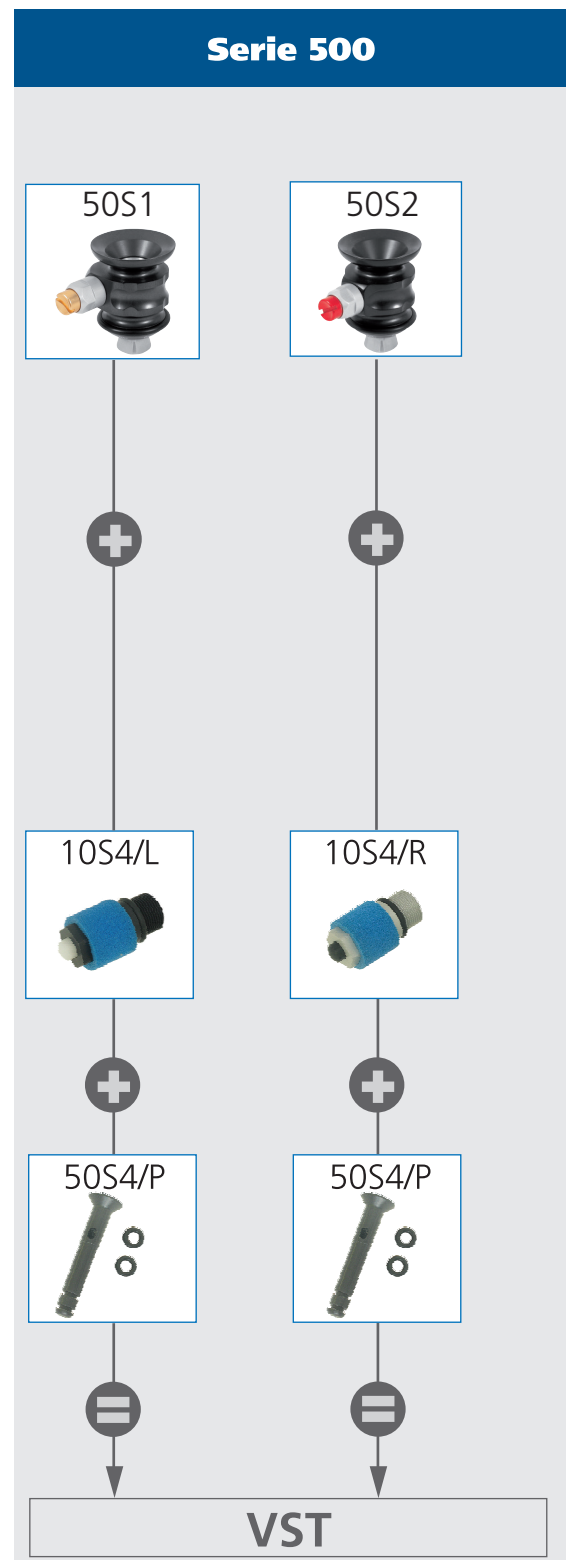
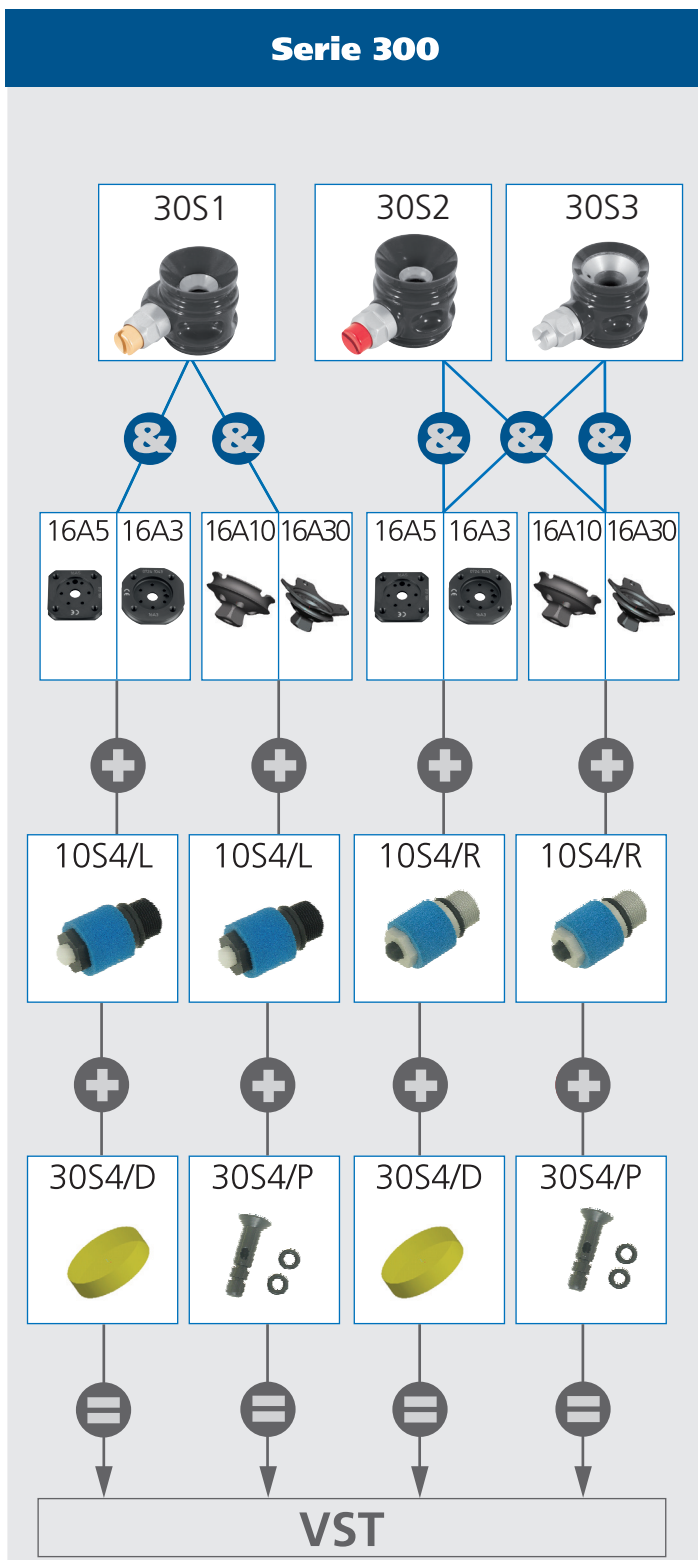
The lock series 500 is made of aluminium and has a distal pyramid adapter. It is especially suited for a rapid and easy manufacture of laminated or thermoplastic prosthetic sockets for stumps without distinct contractures and plumb line deviations.

What does the patient expect from a prosthesis?

This is clearly defined in modern orthopaedics. The artificial limb must be functional and safe and must offer maximum quality. However, the economic aspects will play an even more important role in the future. Therefore, it is our task to implement the increased requirements in an appropriate manner. The result is a special vacuum system – the possibility to switch between the pin system and the vacuum system.



All components are exclusively made of high-quality and corrosion-resistant materials. To switch from the pin system to the vacuum system you need a maximum of five components (depending on the series). Thus, up to 10 different locking systems (with pin) can be converted. Depending on the condition of the stump, you can always switch between the systems especially during the interim phase. Long-term tests have shown that the vacuum technology has a positive impact on the gait pattern of the patient because rotation and pistoning – as a rule – will not occur or only to a small extent.





Clutch-Lock

- no body weight restriction because the lock is not a weight bearing component
- activity level (walky): 1 to 4
- mounting height: approx. 23 mm
- suitable for thermoplastic and laminated sockets
- plastic housing is temperature resistant up to 200 °C

The high-strength, glass-fibre reinforced plastic of the clutch lock can be removed from the thermoformed socket and also used for laminated sockets. Due to the dimensional stability, the lock is absolutely resistant to external influences such as temperature fluctuations or humidity. In combination with a 12A3, 12A5 or 12A7 Socket Attachment Block, the deviation from the socket gradient and plumb line can be easily corrected.

- „EasyClick“ system: optimised pull-in and release mechanism
- Left-hand thread for increased safety
- very flat construction
- very light
- locking unit completely exchangeable
- with lamination dummy 10S1/E6L
- incl. special sealing grease 22A100
- Please order Push-button extensions for geriatric patients or big socket diameters separately

All necessary laminating adapters for the locking unit are included in the delivery.

table 1

Lock	with Pin	Weight	Item-No.
Clutch-Lock	geared	60 g	10S1





Shuttle-Lock

- no body weight restriction because the lock is not a weight bearing component
- Activity level (walky): 1 to 4
- mounting height: approx. 23 mm
- suitable for laminated sockets
- plastic housing is temperature resistant up to 200 °C

The Shuttle-Lock is distinguished by a very small construction and a shock-resistant plastic housing. Inserted into an AK or BK socket with common lamination techniques, it serves as liner locks. In connection with a Socket Attachment Block 12A3, 12A5 or 12A7 you can easily correct the deviation of the socket gradient and the plumb line.

- very flat construction
- very light
- twist-proof pin guide made of stainless steel
- locking unit completely exchangeable
- with lamination dummy 10S1/E6
- incl. special sealing grease 22A100
- Please order Push-button extensions for geriatric patients or big socket diameters separately
- housing variant can also be ordered individually under the following item no.: 10S2/E1 for 10S2

The necessary laminating protection for the locking unit is included in the delivery.



Lock	with Pin	Weight	Item-No.
Shuttle-Lock	rastered	56 g	10S2



Lock Series 150

- no body weight restriction because the lock is not a weight bearing component
- Activity level (walky): 1 to 4 for 15S1 and 15S2
- Activity level (walky): 1 to 3 for 15S3
- mounting height: approx. 23 mm
- suitable for thermoplastic and laminated sockets
- Aluminium housing



The lock series 150 is characterised by its very small design and a high-strength aluminium housing. The aluminium housing can be removed from the deep-drawing socket and used for the laminating socket. Processing is carried out using common deep-drawing or laminating methods. In conjunction with a 12A3, 12A5 or 12A7 Socket Attachment Block, the deviation of the socket gradient and plumb line can be easily corrected.

- Clutch-Lock with „EasyClick“ system: optimised pull-in and release mechanism
- very flat construction
- twist-proof pin guide made of stainless steel
- locking unit completely exchangeable
- with lamination dummy 10S1/E6L (for 15S1), 10S1/E6 (for 15S2 und 15S3)
- incl. special sealing grease 22A100
- please order press button extensions for geriatric patients or big sockets separately

The necessary laminating protection for the locking unit is included in the delivery.

Lock	with Pin	Weight	Item-No.
Clutch-Lock 151	geared	95 g	15S1
Shuttle-Lock 152	rastered	90 g	15S2
Shuttle-Lock 153	plain	85 g	15S3



Shuttle-Lock – water proof




- no body weight restriction because the lock is not a weight bearing component
- Activity level (walky): 1 to 4
- mounting height: approx. 23 mm
- suitable for thermoplastic and laminated sockets
- Aluminium housing

The Shuttle lock 15S2/W is characterised by its very small design and a high-strength aluminium housing. Suitable for fresh, salt or even chlorinated water and manufactured in an excellent quality. The aluminium housing can be removed from the deep-drawing socket and used for the laminating socket. Processing is carried out using common deep-drawing or laminating methods.

- water proof
- very flat construction
- twist-proof pin guide made of stainless steel
- locking unit completely exchangeable
- with lamination dummy 10S1/E6
- incl. special sealing grease 22A100
- please order press button extensions for geriatric patients or big sockets separately

The necessary laminating protection for the locking unit is included in the delivery.

Lock	with Pin	Weight	Item-No.
 Shuttle-Lock	raster	90 g	15S2/W



Vacuum-Clutch-Lock

- no body weight restriction because the lock is not a weight bearing component
- effective height: approx. 23 mm
- extremely good adhesion of the residual limb in the prosthesis
- precisely adjustable vacuum by simple use of the press button
- valve unit 10S4/L completely exchangeable
- with lamination dummy 10S1/E6L
- quickly convertible into pin system

Material	Weight	Item-No.
Aluminium	70 g	15S4



Lamination Dummy for Series 150

- for locking series 100 and 150
- helps during adjustments on the plaster positive

Application	Item-No.
Shuttle- and Easy-Lock	10S1/E6
Clutch-Lock (left-hand thread)	10S1/E6L



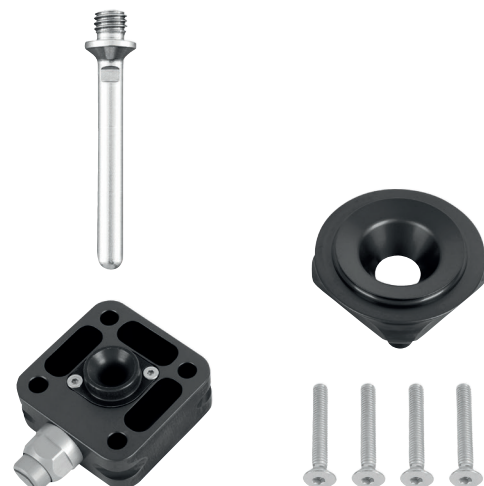
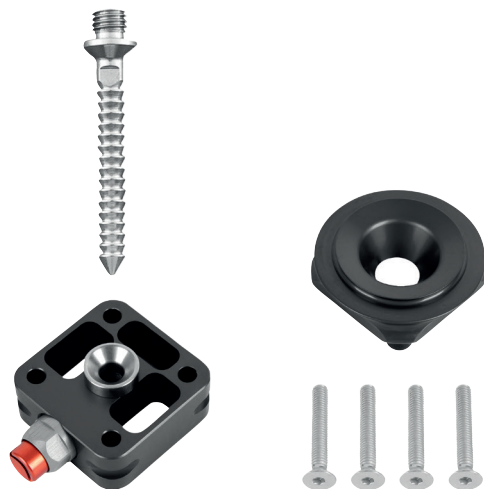
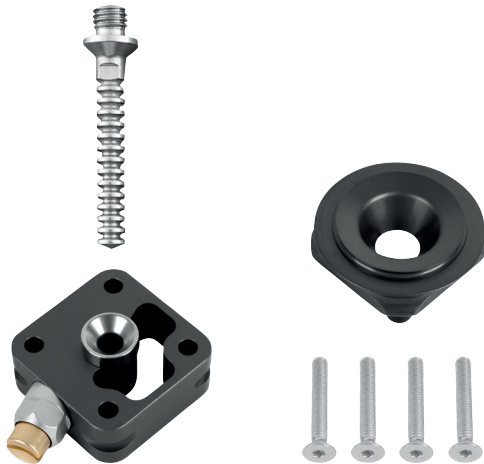
Lock Series 200

- max. patient weight: 125 kg
- Activity level (walky): 1 to 4 for 20S1 and 20S2
- Activity level (walky): 1 to 3 for 20S3
- mounting height: approx. 30 mm
- suitable for thermoplastic and laminated sockets
- Aluminium housing

For the modular construction of prostheses, the flat locking systems of the series 200 offer a variety of combination possibilities.

- Clutch-Lock with „EasyClick“ system: optimised pull-in and release mechanism
- light, flat construction
- Non-rotating lamination disc with multiform ring
- continuous guide bushing made of stainless steel
- distally with channel for planar connection of all socket adapters with 4-hole connection
- easy cleaning and replacing of complete locking unit is possible without dismantling the prostheses
- with Lamination Disc 20S1/E5
- Please order press button extensions for geriatric patients or big sockets separately

The necessary laminating protection for the locking unit is included in the delivery.



Lock	with Pin	Weight	Item-No.
Clutch-Lock 201	geared	198 g	20S1
Shuttle-Lock 202	rastered	172 g	20S2
Shuttle-Lock 203	plain	178 g	20S3

 For direct load transmission from lamination disc to different adapters use the countersunk screw 22A5/M6x40.



Lamination Disc for Series 200

- replacement part for 20S1, 20S2 and 20S3
- with lamination dummy 20S1/E51
- with 4 socket cap screws 22A2/M6x8

Diameter	Item-No.
64 mm	20S1/E5

Dummy for Lamination Disc Series 200

- Service Parts Set for 20S1/E5



Item-No.
20S1/E51

Deep-Drawing Adapter Ring



- accessory
- necessary for the production of thermoplastic sockets
- proximal connection to the lamination disc 20S1/E5 of this ring improves the pin guidance in the socket

Material	Item-No.
Plastic	20S1/E53



Lock Series 300

- max. body weight: 100 kg
- Activity level (walky): 1 to 4 for 30S1 and 30S2
- Activity level (walky): 1 to 3 for 30S3
- Mounting height: 30 mm
- 33 mm with hopper
- suitable for thermoplastic and laminated sockets
- plastic housing is temperature resistant up to 200 °C

The new weight-optimised lock series 300 made of wear-resistant plastic is very suitable for direct lamination or for complete exchange, if you utilise a lamination dummy 30S1/D56 - 30S1/D76. You can attach different lamination discs and socket adapters with 6 screws in the distal end of the socket.



- Clutch-Lock with „EasyClick“ system: optimised pull-in and release mechanism
- Lightweight, weight-optimised construction made of plastic
- multifunctionally applicable
- continuous guide bushing, rotation secured, made of stainless steel
- locking unit completely exchangeable
- easy cleaning and replacing of complete locking unit is possible without dismantling the prostheses
- incl. hopper Ø 66 mm
- incl. special sealing grease 22A100

Accessories

- for laminating in conjunction with: Lamination Disc, round, -Aluminium- 16A3 / Lamination Disc, angular -Aluminium- 16A5 / Socket Adapter with Adjustment Core und Lamination Anchor -Titanium- 16A10 or 16A30 (please order separately)
- to be exchanged with Lamination Dummy 30S1/D56, D66 and D76
- Please order press button extensions for geriatric patients or big sockets separately
- the housing variants can also be ordered individually under the following item no.: 30S1/E1 for 30S1; 30S2/E1 for 30S2, 30S3/E1 for 30S3

The necessary laminating protection for the locking unit is included in the delivery.

Lock	with Pin	Weight	Item-No.
Clutch- Lock 301	geared	77 g	30S1
Shuttle-Lock 302	rastered	82 g	30S2
Shuttle-Lock 303	plain	80 g	30S3





Lamination Disc, round or square -Aluminium-

- with lamination dummy 22A13 for sealing
- rotation secured
- for direct lamination please use countersink screws 22A6/M6x14
- with 4 countersink screws 22A5/M6x14 (zinc-plated) for attaching of socket adapters
- and 6 mounting screws 22A4/29x95 for attachment to the lock series 300

Material	Form / Weight	Mounting height	max. ↑kg	Item-No.
aluminium	Ø 64 mm / 45 g	9 mm	150 kg	16A3
aluminium	[] 52 mm / 32 g	9 mm	150 kg	16A5

Lamination Dummy



- replacement part
- for lamination disc 16A3 and 16A5
- for optimal sealing of the holes and threads without plasticine
- simple and safe handling

Item-No.
22A13

Mini Lamination Disc -Titanium-



- with adjustment core
- rotation secured, for direct lamination
- with 6 mounting screws 22A4/29x95 for attachment to the lock series 300

Material	Form / Weight	Mounting Height	max. ↑kg	Item-No.
Titanium	Ø 47 mm / 48 g	6 mm	75 kg	16A10



Hopper

- accessory
- suitable for all locks of the lock series 300
- for attaching and clamping

for Lock	Diameter	Item-No.
30S2, 30S3	56 mm	30S1/E56
30S1, 30S2, 30S3	66 mm	30S1/E66
30S1, 30S2, 30S3	76 mm	30S1/E76



Lamination Dummy

- accessory
- for all locks of the lock series 300 with hopper
- available in plastic or aluminium
- with retainer
- for transfer of the lock unit into the socket we recommend our lock unit milling cutter 150P1 with \varnothing 22 mm

for Lock	\varnothing / Material	Item-No.
30S2, 30S3	56 mm / POM	30S1/D56
30S2, 30S3	56 mm / Aluminium	30S1/AD56
30S1, 30S2, 30S3	66 mm / Aluminium	30S1/AD66
30S1, 30S2, 30S3	76 mm / Aluminium	30S1/AD76



Lamination Dummy for Lock Series 300

- replacement part
- helps during adjustments on the plaster positive
- seals the lock unit

Application	Item-No.
Clutch-Lock (left-hand thread)	30S1/E6L
Shuttle- and Easy-Lock	30S1/E6



Lock Series 400

- max. body weight: 125 kg
- Activity level (walky): 1 to 4 for 40S1 and 40S2
- Activity level (walky): 1 to 3 for 40S3
- mounting height: approx. 33 mm
- suitable for thermoplastic and laminated sockets
- Aluminium housing

Due to the large socket adapter, series 400 is especially suitable for AK- and BK- residual limbs with very large distal circumference. The housing, made of a high quality aluminium alloy, is distally fitted with an adjustment core for a compact construction.



- Clutch-Lock with „EasyClick“ system: optimised pull-in and release mechanism
- with socket adapter 10A21/S for laminating into the socket
- with lamination dummy 22A9
- with distal adjustment core
- easy cleaning and replacing of complete locking unit
- incl. special sealing grease 22A100
- Please order press button extensions for geriatric patients or big sockets separately

The necessary laminating protection for the locking unit is included in the delivery.

Lock	with Pin	Weight	Item-No.
Clutch-Lock 401	geared	158 g	40S1
Shuttle-Lock 402	rastered	147 g	40S2
Shuttle-Lock 403	plain	136 g	40S3





Lock Series 500

- max. body weight: 125 kg
- Activity level (walky): 1 to 4
- mounting height: approx. 37 mm
- suitable for thermoplastic and laminated sockets
- Aluminium housing

The advantage of the lock series 500 is the time-saving manufacturing of thermoplastic sockets. Through the simple construction the housing will be completely enclosed by the socket material. The integrated cutting protection allows a fast and safe uncovering of the adjustment core.



- Clutch-Lock with „EasyClick“ system: optimised pull-in and release mechanism
- Housing with pull-in channel
- continuous guide bushing made of stainless steel
- easy cleaning and replacing of complete locking unit is possible without dismantling the prostheses
- incl. special sealing grease 22A100
- Please order press button extensions for geriatric patients or big sockets separately

The necessary laminating protection for the locking unit is included in the delivery.

Lock	with Pin	Weight	Item-No.
Clutch-Lock 501	geared	170 g	50S1
Shuttle-Lock 502	rastered	162 g	50S2



Lamination Dummy for Lock Series 500

- accessory
- for deep-drawing or lamination

Application	Item-No.
Clutch-Lock (left-hand thread)	50S1/E5L
Shuttle-Lock and Easy-Lock	50S1/E5



Vacuum Lock 30S4

- effective height: 25 mm
- offers a high level of safety and comfort
- special muffler reduces noise
- suitable for thermoplastic and laminated sockets
- heat resistant plastic up to 200 °C
- no elongation in the socket
- exactly adjustable regulation of the valve
- incl. lamination dummy 30S4/E6 (separately available) and o-ring set 30S4/E9 (separately available as spare part set)

Weight	max. ↑ kg	Item-No.
75 g	150 kg	30S4



Dummy for Vacuum-Lock 30S4

This dummy is especially made for the production of check sockets with Vacuum-Lock-System 30S4. The dummy allows for the application of all liner sizes and kinds of liners and is reusable.

- sealing ring included
- with fastener
- and spare sealing ring

Material	Diameter	Item-No.
Aluminium	50 mm	30S4/AD50



Vacuum-Valve

- for lock series 100, 150, 300 and 500
- low maintenance valve due to filter screen
- vacuum can be regulated precisely
- compatible with nearly all streifeneder pin lock-systems
- quick and easy installation and retrofitting without any special tools
- special muffler reduces noise

Thread	Item-No.
Left	10S4/L
Right	10S4/R



Sealing Disc

- for sealing kit, to seal the lock series 300

Material	Weight	Item-No.
Silicone	10 g	30S4/D



Sealing Plunger, Series 500

- for sealing kit, to seal the lock series 500
- o-ring set 30S4/E8 available as spare part set (PU = 10 pcs.)

Material	Weight	Item-No.
POM black	30 g	50S4/P



Sealing Plunger, Series 300

- for sealing kit, to seal the lock series 300 in combination with 16A10 and 16A30
- o-ring set 30S4/E8 available as spare part set (PU = 10 pcs.)

Material	Weight	Item-No.
POM black	24 g	30S4/P



Silencer

- for vacuum valve 10S4/L and 10S4/R

Sales unit	Item-No.
1 pcs	10S4/E6



O-Ring


- for vacuum valve 10S4/L and 10S4/R
- separately available or as set

Sales unit	Item-No.
1 pcs	10S4/E7



Replacement Lock Unit

- for locking systems
- complete
- for simple exchange
- Replacement Lock Unit 10S2/WE2 to Shuttle Lock water proof 15S2/W

Application	for Pin	Item-No.
Clutch-Lock	geared	10S1/E2
Shuttle-Lock	rastered	10S2/E2
Easy-Lock	plain	10S3/E2
 Shuttle-Lock, water proof	rastered	10S2/WE2



Replacement Push Button

- accessory
- gold anodized
- suitable for all clutch-lock locking systems

Application	Material	Item-No.
Clutch-Lock	Aluminium	10S1/E21



Clutch Lock Block Unit, lockable

- through pressing and smooth distortion of the press button the lock unit is permanently blocked
- thus the patient can use both hands for taking off the prostheses
- the re-engineered lock mechanism allows an easy deblocking of the pin under load
- suitable for all clutch lock housings
- replace present lock unit with the blockable one

Application	for Pin	Item-No.
Clutch-Lock	geared	10S1/E2V



Integrated Patient Key

- for clutch lock
- directly drawing in through the ring is possible

Item-No.
10S1/40



Push Button Extension

- suitable for all lock types
- for geriatric patients or big socket diameters
- big button with finger dent
- easy reduction, finger dent remains in place

Material	Length	Diameter	Item-No.
Plastic	45 mm	21 mm	10S1/45



Push Button Extension

- suitable for all lock types
- for geriatric patients or big socket diameters
- pre-grooved button extension eases cutting
- turn button helps to pull the PIN-Liner into the socket

Material	Length	Diameter	Item-No.
Aluminium	70 mm	16 mm	10S1/70



Push Button Extension extra long

- suitable for all lock types
- extra long extension

Material	Length	Diameter	Item-No.
Aluminium	85 mm	16 mm	10S1/85



Push Button Extension with slot

- suitable for all lock types
- pre-grooved button extension eases cutting

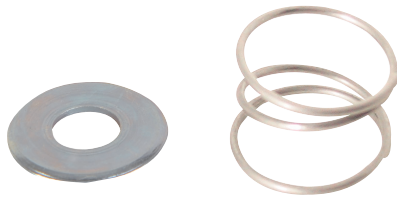
Material	Length	Diameter	Item-No.
Aluminium	50 mm	13 mm	10S1/50



Patient Key

- accessory
- for readjustment of a clutch-lock-locking unit
- for installation of the liner pin
- suitable for all lamination dummies of the lock

Material	Item-No.
Stainless Steel	10S1/E4



Replacement Lock Washer

- for all easy-lock systems
- including spring
- for exchange inside the lock body

Item-No.
10S3/E



Service-Set for Easy Locks 10S3, 15S3, 30S3, 50S3

- for easy-locks
- components: guide bushing, closing lid

Item-No.
10S3/E30



Easy-Lock Pin -with Drill Hole-

- usable especially for lock system 10S3 and 15S3
- for direct screwing into the liners' distal connection
- drawstring as a pulling in aid for more voluminous residual limbs
- cord (8S1/E200) not included in scope of delivery

Length	Item-No.
50 mm	10S3/E450



Replacement Pin

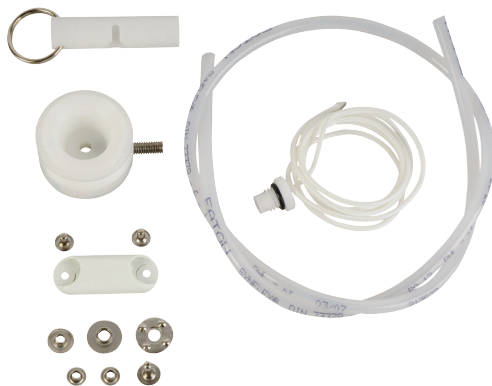
- accessory
- for lock systems
- for direct screwing into the liners' distal connection
- comes in various lengths
- Shuttle-Lock water proof

Length	for	Pin type	Item-No.
35 mm	Clutch-Lock	geared pin	10S1/E335
50 mm	Clutch-Lock	geared pin	10S1/E350
65 mm	Clutch-Lock	geared pin	10S1/E365
85 mm	Clutch-Lock	geared pin - long	10S1/E385
35 mm, water proof	Shuttle-Lock	rastered pin	10S2/E335
50 mm, water proof	Shuttle-Lock	rastered pin	10S2/E350
65 mm, water proof	Shuttle-Lock	rastered pin	10S2/E365
35 mm	Easy-Lock	plain pin	10S3/E335
50 mm	Easy-Lock	plain pin	10S3/E350
65 mm	Easy-Lock	plain pin	10S3/E365



Pin Cover

Item-No.
22A11



Cord Locking System

- for deep-drawing sockets
- installation height: 26 mm
- very light construction
- easy to put on
- very suitable for geriatric and insecure patients
- with plastic cover for external socket fixation
- with latching clamp
- weight: 24 g

Mounting Height	Item-No.
26 mm	8S1



Lanyard with Liner Connection Screw

- for lanyard lock 8S1
- easy pulling into the socket

Item-No.

8S1/E2



Latching Clamp

- for cord locking 8S1

Item-No.

8S1/E3



Lanyard

- for lanyard lock 8S1

PU = 5 m

Item-No.

8S1/E200



Winding Button Set

- for lanyard lock 8S1
- complete winding button
- one-handed fixation of laces

PU = 1 set

Item-No.

8S1/E5



Lock Unit Milling Cutter

- accessory
- for milling of the push button if you utilise a lamination dummy of the series 300

Diameter	Item-No.
22 mm	150P1



Socket Head Spanner

- accessory
- for exchange of the lock mechanisms of the lock systems
- with span 16 mm
- with handle

Length	Spanner size	Item-No.
200 mm	16 mm	173P15/16



Mounting Key

- accessory
- for the exchange of the easy-lock lock washer

Item-No.
10S300



High Performance Maintenance Spray



- accessory
- recommendable for all lock systems
- full-synthetic lubricant, no bonding or resinating of surfaces
- abrasion reducing
- cleaning
- protective against corrosion
- suppresses dampness

Content	Item-No.
500 ml	117P22



Sealing Grease (Stick Wax)

Material

- stick wax
- colour: yellowish

Application

- for tight sealing during the lamination process of locking systems

Characteristics

- sticky
- highly temperature resistant

PU = 1 tin

Content	Item-No.
5 ml	22A100

Streifeneder
ortho.production GmbH
Moosfeldstrasse 10
82275 Emmering
Germany
T +49 8141 6106-0
F +49 8141 6106-70
export@streifeneder.de
www.streifeneder.com/op



100W216/E 2022-04

This catalogue is protected by copyright.

Reproduction of the complete catalogue, even in abstracts, in any form or by any means, is only permitted with explicit written authorisation of the Streifeneder ortho.production GmbH.

The indicated measurements and weights are guide values without obligation. Slight deviations in construction, shape, colour or scope of supply may occur.

Products are subject to change without prior notice after press date of this catalogue, 2022-04-01.

Our general terms and conditions apply; they can be viewed anytime at www.streifeneder.com/op.