

Product Information Carbon Foot Series GO.



- Carbon foot GO.smart.....08
- Carbon foot GO.relax09
- Carbon foot GO.free10
- Accessories.....11 – 12

Made for humans.

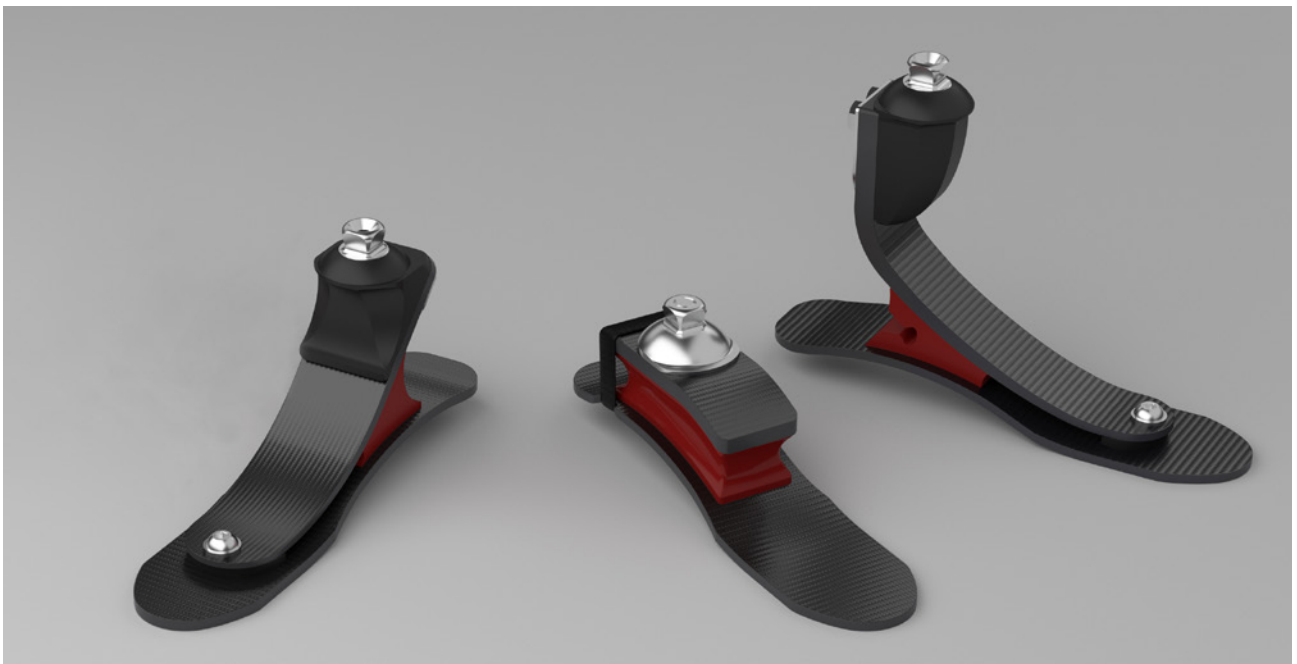
Motion, freedom and mobility are usually taken for granted by healthy people. For lower-limb-amputees, however, it is a high privilege. With a prosthetic foot, this loss can be compensated and thus enable the person to live a life close to that of a healthy human.

To achieve that, it is important to select the prosthesis individually and according to the user's activity. The prosthetic foot series GO., developed mainly by Streifeneder, covers with the three different types GO.smart, GO.relax and GO.free all activity levels between 1 and 4. Customers can rely on the usual high-quality material composition, optimal wearing comfort and first-class quality.

Three times quality.

The basic part of all three types is a broad spring made of multilayered carbon. It grants lateral stability and meets the increased safety demands of prosthetic users. Together with the shape retaining but flexible elastomers, an intelligent interaction of the materials develops; providing dynamics, multi-axiality as well as controlled and natural gait characteristics.

The carbon serves as optimal energy storage: during heel strike, energy is absorbed, stored and finally released during roll-over of the toes.



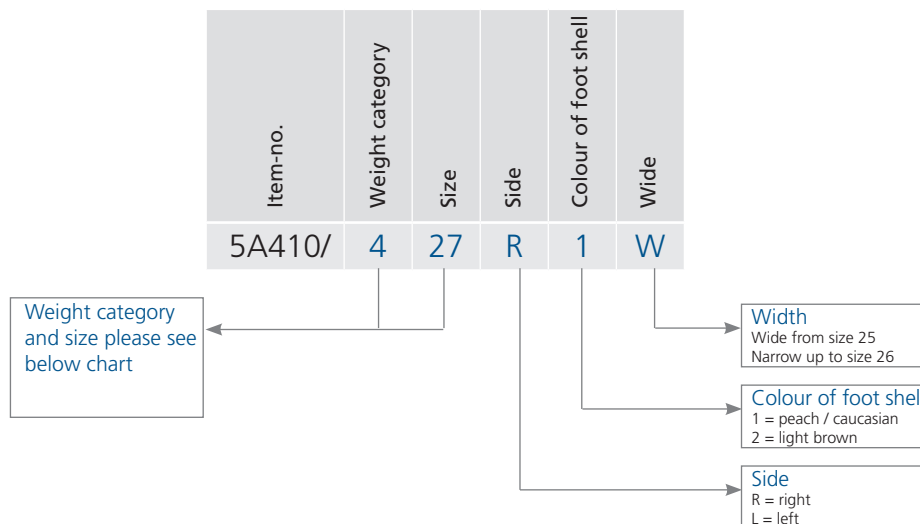
Functional and dynamic.

The GO.smart and the GO.relax meet the demands of users limited in their mobility who are moderately active. The prosthetic feet are ideal companions at home and nearby; perfectly balancing out uneven ground such as cobble stone or grass paths. Wearing comfort and safety are provided by the long forefoot lever and the elastomeric core, which takes up the motion and makes the carbon foot into a multi-axial joint.

For daily active or even sporty users, the GO.free is the optimal solution. Furthermore, the technician can also adapt the heel hardness individually to the demands of the user by two insertable wedges.

Ordering with structure.

To grant a simple and fast ordering process, the item-numbers of all prosthetic feet and accessories follow a uniform structure. For exemplary sequence, please see the charts shown here:



GO.relax 5A420 / GO.free 5A430

| Max. body weight | 60 kg 132 lbs. | 80 kg 176 lbs. | 100 kg 220 lbs. | 125 kg 275 lbs. | 150 kg 330 lbs. |
|------------------|-------------------|-------------------|--------------------|--------------------|--------------------|
| Weight category | 3 | 4 | 5 | 6 | 7 |
| Size 22 cm | | | | | |
| Size 23 cm | | | | | |
| Size 24 cm | | | | | |
| Size 25 cm | | | | | |
| Size 26 cm | | | | | |
| Size 27 cm | | | | | |
| Size 28 cm | | | | | |
| Size 29 cm | | | | | |

GO.smart 5A410

| Max. body weight | 60 kg 132 lbs. | 80 kg 176 lbs. | 100 kg 220 lbs. | 125 kg 275 lbs. |
|------------------|-------------------|-------------------|--------------------|--------------------|
| Weight category | 3 | 4 | 5 | 6 |
| Size 22 cm | | | | |
| Size 23 cm | | | | |
| Size 24 cm | | | | |
| Size 25 cm | | | | |
| Size 26 cm | | | | |
| Size 27 cm | | | | |
| Size 28 cm | | | | |
| Size 29 cm | | | | |

Strong cover.

The foot shell for carbon feet GO. creates a natural and inconspicuous appearance. The cover protects from scratches or impacts and nevertheless, is light-weight and comfortably to wear. The product is available in two different widths and skin tones and is characterized by excellent fit in all sizes.

A pleasant benefit: the shell fits on all foot types of the GO.series. The connecting cap is attached by simple clicking in and closes the shell in a harmonious, round shape.

Benefits at one glance

- natural appearance
- comfortable, high-quality haptics
- connecting cap provides round finish of the shell
- available in 2 widths
- 2 skin tones available
- foot shell matches all foot types of GO.series
- extreme stability of shape



GO.smart

carbon foot




- intelligent interaction between elastomer and carbon
- controlled dynamic properties
- wide basic spring for lateral stability
- prolonged full contact
- multi-axiality
- incl. foot shell and spectra-sock

Technical data

- max. body weight up to 125 kg / 275 lbs. (depending on size)
- mobility class (walky): 1 to 2
- connection: pyramid
- heel height: 10 mm
- weight: 594 g / 1,3 lbs. (size 27 incl. foot shell and spectra-sock)
- construction height: size 22 – 25 cm = 61 mm, Größe 26 – 29 cm = 69 mm
- maintenance-free
- warranty: 24 months

| Size | Side | Colour | Item-No. |
|------------|-------|-----------------|-------------|
| 22 – 26 cm | left | beige/caucasian | 5A410/..L1 |
| 22 – 26 cm | right | beige/caucasian | 5A410/..R1 |
| 25 – 29 cm | left | beige/caucasian | 5A410/..L1W |
| 25 – 29 cm | right | beige/caucasian | 5A410/..R1W |
| 22 – 26 cm | left | light brown | 5A410/..L2 |
| 22 – 26 cm | right | light brown | 5A410/..R2 |
| 25 – 29 cm | left | light brown | 5A410/..L2W |
| 25 – 29 cm | right | light brown | 5A410/..R2W |

Please indicate the size needed, for example 5A410/324L1 = size 24 cm, left, beige

 The letter "W" at the end of the item-number stands for wide foot shape



GO.relax

carbon foot



- intelligent interaction between elastomer and carbon
- natural gait pattern on various surfaces
- wide basic spring for lateral stability
- prolonged full contact
- multi-axiality
- incl. foot shell and spectra-sock

Technical data

- max. body weight up to 150 kg / 330 lbs. (depending on size)
- mobility class (walky): 2 to 3
- connection: pyramid
- heel height: 10 mm
- weight: 620 g / 1,37 lbs. (size 27 incl. foot shell and spectra-sock)
- construction height: size 22 – 25 cm = 103 mm, size 26 – 29 cm = 106 mm
- maintenance-free
- warranty: 24 months

| Size | Side | Colour | Item-No. |
|------------|-------|-----------------|-------------|
| 22 – 26 cm | left | beige/caucasian | 5A420/..L1 |
| 22 – 26 cm | right | beige/caucasian | 5A420/..R1 |
| 25 – 29 cm | left | beige/caucasian | 5A420/..L1W |
| 25 – 29 cm | right | beige/caucasian | 5A420/..R1W |
| 22 – 26 cm | left | light brown | 5A420/..L2 |
| 22 – 26 cm | right | light brown | 5A420/..R2 |
| 25 – 29 cm | left | light brown | 5A420/..L2W |
| 25 – 29 cm | right | light brown | 5A40/...R2W |

Please indicate the size needed, for example 5A420/324L1 = size 24 cm, left, beige



The letter "W" at the end of the item-number stands for wide foot shape



GO.free

carbon foot




- intelligent interaction between elastomer and carbon
- dynamic and natural gait pattern on various surfaces
- wide basic spring for lateral stability
- prolonged full contact
- multi-axiality
- flexible adjustment of heel hardness by heel wedges
- incl. foot shell and spectra-sock

Technical data

- max. body weight up to 150 kg / 330 lbs. (depending on size)
- mobility class (walky): 3 to (4) (not suitable for frequent sporty activities)
- connection: pyramid
- heel height: 10 mm
- weight: 660 g / 1,45 lbs. (size 27 incl. foot shell and spectra-sock)
- construction height: size 22 – 25 cm = 144 mm, size 26 – 29 cm = 155 mm
- maintenance-free
- warranty: 36 months

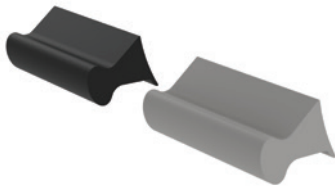
| Size | Side | Colour | Item-No. |
|------------|-------|-----------------|-------------|
| 22 – 26 cm | left | beige/caucasian | 5A430/..L1 |
| 22 – 26 cm | right | beige/caucasian | 5A430/..R1 |
| 25 – 29 cm | left | beige/caucasian | 5A430/..L1W |
| 25 – 29 cm | right | beige/caucasian | 5A430/..R1W |
| 22 – 26 cm | left | light brown | 5A430/..L2 |
| 22 – 26 cm | right | light brown | 5A430/..R2 |
| 25 – 29 cm | left | light brown | 5A430/..L2W |
| 25 – 29 cm | right | light brown | 5A430/..R2W |

Please indicate the size needed, for example 5A400/324L1 = size 24 cm, left, beige

 The letter „W“ at the end of the item-number stands for wide foot shape

Wedge set

for carbon foot GO.free



| Size | Item-No. |
|------------|-----------|
| 22 – 25 cm | 5A430/E31 |
| 26 – 29 cm | 5A430/E32 |



colour: beige/caucasian



colour: light brown

Foot shell

for all carbon feet GO.

- incl. connection plate

| Size | Side | Colour | Item-No. |
|------------|-------|-----------------|--------------|
| 22 – 26 cm | left | beige/caucasian | 5A400/X..L1 |
| 22 – 26 cm | right | beige/caucasian | 5A400/X..R1 |
| 25 – 29 cm | left | beige/caucasian | 5A400/X..L1W |
| 25 – 29 cm | right | beige/caucasian | 5A400/X..R1W |
| 22 – 26 cm | left | light brown | 5A400/X..L2 |
| 22 – 26 cm | right | light brown | 5A400/X..R2 |
| 25 – 29 cm | left | light brown | 5A400/X..L2W |
| 25 – 29 cm | right | light brown | 5A400/X..R2W |

Please indicate the size needed, for example 5A400/X24L1 = size 24 cm, left, beige



The letter "W" at the end of the item-number stands for wide foot shape

Spectra-sock

for all carbon feet GO.

- black sock



| Size | Quantity | Item-No. |
|------------|----------|-----------|
| 22 – 25 cm | 1 pcs. | 5A400/E11 |
| 22 – 25 cm | 6 pcs. | 5A400/E12 |
| 26 – 29 cm | 1 pcs. | 5A400/E13 |
| 26 – 29 cm | 6 pcs. | 5A400/E14 |

Connection plate

for all carbon feet GO.



colour: beige/caucasian



colour: light brown

| Size | Side | Colour | Item-No. |
|------------|-------|-----------------|-----------|
| 22 – 25 cm | left | beige/caucasian | 5A400/E41 |
| 26 – 29 cm | left | beige/caucasian | 5A400/E42 |
| 22 – 25 cm | right | beige/caucasian | 5A400/E43 |
| 26 – 29 cm | right | beige/caucasian | 5A400/E44 |
| 22 – 25 cm | left | light brown | 5A400/E45 |
| 26 – 29 cm | left | light brown | 5A400/E46 |
| 22 – 25 cm | right | light brown | 5A400/E47 |
| 26 – 29 cm | right | light brown | 5A400/E48 |

Shoe horn

for all carbon feet GO.



| Item-No. |
|----------|
| 5M400 |

Do you know our training centre Streifeneder ortho.training?

In order to stay competitive and in order to meet the growing requirements of the patients, it is no longer enough to just use high quality orthopaedic products. Profound practical skills on the basis of current scientific research and findings creates optimal conditions to always react competently and confidently in daily practice. In order to convey valuable expertise as well as detailed knowledge to specialists in orthopaedic and orthopaedic shoe technology as well as physiotherapy and podiatry, we have originated the Training Centre Streifeneder ortho.training in Emmering.

A spacious auditorium (AudiMax) with 160 seats and a fully equipped workshop with 15 work stations, a machine room as well as a patient fitting room and a plaster room on approx. 1.000 sqm offer more than optimal conditions for a qualified advanced and continuous education on the highest level. Modern tools such as multimedia equipment, a fully equipped gait analysis laboratory, course materials and teaching aids that meet the demands of our clients are also part of our standards.



Kapitelname

Our meticulously elaborated seminar program comprehends more than 50 events per year centered around topics such as silicone processing, pre-preg processing, synthetic materials or gait analysis. With a flexible program planning on our part, we are also able to react to individual customer's wishes and to offer seminars about special subjects upon request. In order to guarantee an array of seminars that is as broad as possible we regularly invite high-carat external guest lecturers to our training centre Streifeneder ortho.training.

You can download our current Streifeneder seminar calendar with further information about all of our seminars from our website at www.streifeneder.com/training.

Of course, we will also gladly send it to you by post or email. Please feel free to contact us at: training@streifeneder.de or by telephone +49 8141 6106-200.

We are looking forward to hearing from you!

Streifeneder
ortho.production GmbH
Moosfeldstrasse 10
82275 Emmering
Germany
T +49 8141 6106-0
F +49 8141 6106-70
export@streifeneder.de
www.streifeneder.com/op



100W222/E 2021-06

This catalogue is protected by copyright.

Reproduction of the complete catalogue, even in abstracts, in any form or by any means, is only permitted with explicit written authorisation of the Streifeneder ortho.production GmbH.

The indicated measurements and weights are guide values without obligation. Slight deviations in construction, shape, colour or scope of supply may occur.

Products are subject to change without prior notice after press date of this catalogue, 2021-06-21. Our general terms and conditions apply; they can be viewed anytime at www.streifeneder.com/op.



40691731131