

Our latest addition: +PLUSeries®

Fast as lightning and  
super strong



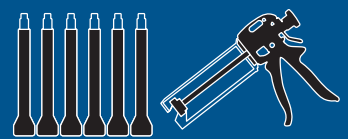
The black +PLUSeries® Composite 1 Minute Adhesive bonds and repairs carbon and many other materials.

Extremely strong and particularly fast bonding, it is the product of choice for bonding socket attachments and socket adapters: **solid after 1 minute, grindable after 5 minutes, final strength after 15 minutes.**

Apply and move on immediately – +PLUSeries® Composite 1 Minute Adhesive is suitable for all kinds of application:

Joint installation, vacuum connections, mending plaster models, repairs, edging of sockets and much more.

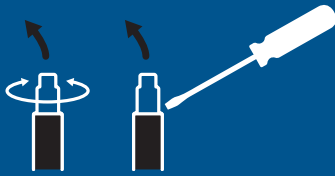
Add it to your next order right away!



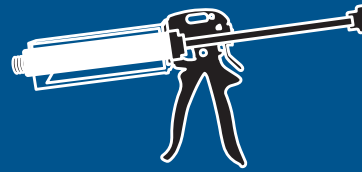
The adhesive comes in a set with two mixing nozzles.

The matching accessories, mixing nozzles and extraction gun, are also available for purchase from us.

# Tips and tricks



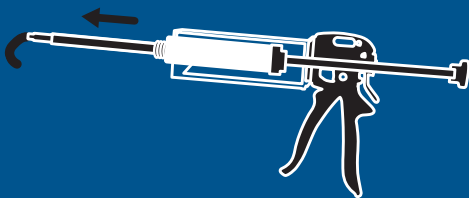
**1** Remove the cap of the 50 ml cartridge **by turning and pulling**. The 220 ml cartridge is opened by **levering open the top slot** with a screwdriver.



**2** Insert the cartridge into the **mixing gun**.



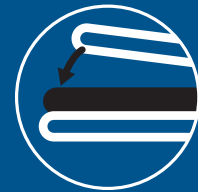
**3** **Secure** the mixing nozzles **by tightening** the cartridge.



**4** Press the **adhesive through the mixing nozzle** and remove the first part of the released adhesive.



**5** Now apply a **generous amount** of the adhesive to the product to be treated.



**6** Attach the counterpart **within the recommended processing time**.



**7** Allow to dry for **5 minutes** before sanding. **Grind** and **polish** with customary tools.



**8** After **10-15 minutes** the adhesive is **fully ready for use**.



## Important:

- Leave the **used mixing nozzle on the cartridge**, so it can serve as a new, airtight cap.
- Uncured material **can be cleaned with acetone**.
- Wear **gloves**.

Item-No.	Designation
90C4/50	+PLUSeries®Composite 1 Minute Adhesive, 50 ml
90C4/220	+PLUSeries®Composite 1 Minute Adhesive, 220 ml
90C5/50	Mixing nozzles for +PLUSeries®, 50 ml
90C5/220	Mixing nozzles for +PLUSeries®, 220 ml
82E6/50	Mixing gun, 50 ml
90C6/220	Mixing gun, 220 ml